

FRIEND TO FRIEND

Volume XXIII
Issue 6

Friendship Force of
Kern County
PO Box 2552
Bakersfield, CA 93303
www.ffkern.org

President:

Steve McCalley
smccalley@bak.rr.com
661-587-4840

**NEWSLETTER
DEADLINE**

**10 TH OF EACH
MONTH**

*The
Friendship
Force*



Kern County, California
www.ffkern.org



MESSAGE from STEVE ...

I think our President Steve is out of town as this issue goes to press, so you'll have to wait till next month to hear what he has to say.

Happy traveling, Steve.

GENERAL MEETING

Wednesday, June 22

Emad Meerza, the president of the Islamic Shoura council, will speak on the Islamic culture in our community. We will be ordering dinner from the local Flaming Skewers, and we need to have orders paid directly to Nedra, in advance. We are hoping for a great turnout of members so that we can better understand other cultures, which is the very core belief of Friendship force. Please join us!!



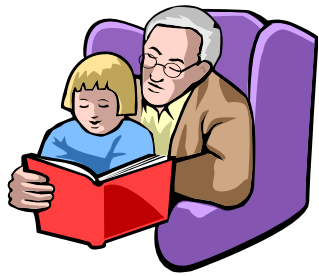
RESERVATIONS ARE NEEDED FOR THE DINNER AT THE MEETING

JUNE 22, 2011

CALL 871-5212

\$10.00

A full Mediterranean dinner will be served, catered by Flame and Skewers. I have 15 paid reservations but we need better attendance than that. We will have a great learning experience from our local Muslim community. Please put this on your calendar and call Nedra Gilfillan, 871-5212 with a promise to pay whether you show up or not!!! A reservation made is a reservation paid since I have to pay for all the food I order. WE NEED YOU!!!!



GGEE – Grandparents/Grandchildren Eco-Exchange

Late Monday evening August 8, 25 ambassadors from Germany, Japan and Ukraine will arrive in Kern County. This is a first time ever opportunity designed specifically for grandparents and their grandchildren. The grandchildren are between the ages of 11 and 17. No age specifications for grandparent! The week is chock full of activities focused on getting acquainted while learning something about the ecology of our area.

At this time we are looking for two homes and two friends for two 15 year old German boys who would like to have a mini-exchange student experience, staying apart from their grandparent. All my contacts are girls, so their placement is taking a little longer. If you have anyone in mind who might fill the bill, PLEASE let me know ASAP.

We also invite you to consider participating in some or all of the events, whether or not you have a grandchild to come along. A sign-up form will be available once final plans are in place. Below is a tentative schedule, including cost to participate, so you can start thinking about it right away. Ana Lucia Chiles and I are the exchange directors, and I would say our only problem so far is trying to fit in all the experiences that we would like our guests to have.

We will need several day hosts during the week, particularly on Tuesday, Thursday and possibly Saturday. so if you aren't hosting already and can keep those days available, that would be great. Here is the tentative schedule of events.

CALENDAR 2010



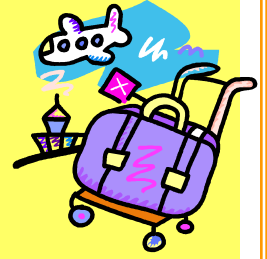
General Meeting, need RSVP	June 22
Grandparent/ Grandchild Inbound exchange	August 8-15
Hay River, Canada Outbound exchange	August 28-September 9

SCHEDULE

Tuesday	Board of Supervisors welcome/tree
	Welcome brunch at Hodels, \$15
	Afternoon swim party
***	Tee shirt with GGEE logo, \$5.00
	Hamburger BBQ with donated desserts,
Wednesday	Bus trip, 100 Giants, \$20 includes bus
Thursday	CALM (Adults \$9, Seniors \$7, 3-12 \$5)
	El Mercado lunch, user pay
	kids only: 2 hours Bowling
Friday	Bus to coast, \$20
	2 hr Kayak Morro Bay, \$18
Saturday	Rankin Ranch hayride and lunch, \$25
	optional 45 minutes horseback ride, \$35
	neighborhood potlucks
Sunday	Farewell Dinner, \$18

HAY RIVER EXCHANGE CONTINUED FROM LAST MONTH

When I left off last month we had just had a half day trip of Edmonton. (I really feel like I am writing one of the soaps.) We head for the airport in the morning and fly by Westair Jet to Yellowknife, Northwest Territories. It is the provincial capital of NWT. It is 625 more miles north of Edmonton.



About Yellowknife

At the edge of the Arctic, in the heart of the wilderness, lies a city of youth, energy, adventure and prosperity. Yellowknife is a culturally rich capital thriving with diversity, and home to about 20,000 people. Located on the shores of the beautiful Great Slave Lake, only 512 km south of the Arctic Circle, we are known for our outdoor recreation, midnight sun, aurora borealis and an unusual blend of northern culture... a City where history is found throughout a modern, bustling metropolis.

Built on gold, nurtured by government and growing with diamonds, Yellowknife offers unrivalled opportunities for investment, tourism, business development and employment. The abundance of minerals, oil and gas in the NWT has had dramatic economic impacts on Yellowknife. Since the discovery of diamonds in 1991, we have three operating diamond mines in the NWT.

If there is any part of Canada that can say "we hold the future", it must certainly be Yellowknife - The Diamond Capital of North America™.

I am still trying to connect with people who can provide us with a tour while we spend 4 hours waiting for our exciting flight to Hay River.

We will fly Buffalo Airways to Hay River across the Great Slave Lake. It will take 45 minutes. The DC-3 is a very important airplane in the history of aviation. Aviation buffs think we are a lucky bunch to be able to do this. I was told this at the Minner Air Show when I talked to the museum guide.



**FRIENDSHIP FORCE OF KERN
COUNTY
PO BOX 2552
BAKERSFIELD, CA 93303**

www.ffkern.org

WHAT IS FRIENDSHIP FORCE?

The Friendship Force is a non-profit organization sponsoring people to people exchanges of individuals and families to over fifty nations of the world. It brings people of the world together through home hospitality experiences that can build lasting bonds of friendship

OFFICERS 2011

President: Steve McCalley, 587-4840 Vice President, Ana Lucia Chiles, 324-2792
Secretary, Kate Himes, 599-2241 Treasurer, Marie Krause, 758-2537
Past Co-Presidents, Charles Switzer, 588-4553 and Caroline West, 325-6223

STANDING COMMITTEES

Director of Exchanges	Ben Goossen	746-4789
Membership	Susan Eagle	472-3191
Exchange Treasurer	Marie Krause	758-2537
Hospitality	Susan Eagle	472-3191
Publicity	Nancy Hazle	835-9434
Telephone	Julia Linfesty	831-0629
Newsletter	Joan Florence	808-5133
Raffle	Chuck Switzer	588-4553
Interclub	Judy Chase	854-3956
Supplies Inventory	Hildie Elges	871-3442

EXCHANGE DIRECTORS

2010 Inbound Houston, Texas, Nancy Hazle, 835-9434
2010 Inbound England, Pauline Larwood, 871-6090
2010 Outbound Cardiff UK (Global), Sandra Larson, 746-6056
2011 Outbound Hay River, Canada, Nedra Gilfillan, 871-5212